



In the heart of the capital of Flanders and a 10-minute walk from the train stations, the Mercure Vieux Lille is just like the region: welcoming. With 74 rooms and a private parking, this is the ideal place to explore Lille and its surroundings.

📍 27 rue des tours  
59800 Lille

☎ 03 59 57 47 00

✉ h9735@accor.com

📅 Commercial service : Caroline Verplancke  
h9735-sb@accor.com



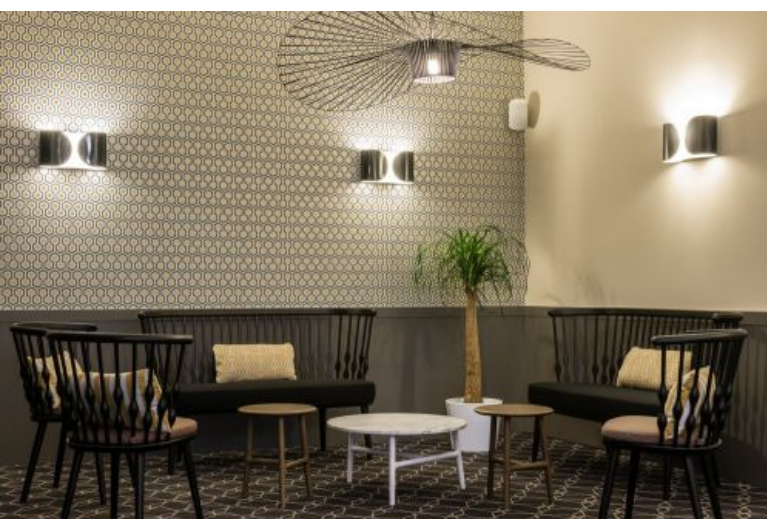
📍 of the hotel

- In the heart of old Lille and its shops
- Close to historical center and restaurants
- Outside terrace
- Roofed and safe Parking

### Hotel labels



Clef Verte



## 74 ROOMS



40

Double (incl. Single)



20

Twins



14

Triple Families



Meeting rooms



Restaurants  
nearby



Car park



Bike room



Accessibility for  
people with  
reduced mobility



Bar



Pets accepted



Air conditioner

### OTHER SERVICES

Leisure groups accepted, Terrace, Breakfast Buffet, Charging stations for electric vehicles, Welcome tray, Video surveillance, Safe, Mini-bar, Luggage porter, Wifi

## AROUND THE HOTEL

### Transports :



**Airport**  
Lille 10km



**Public transports**  
Metro 800m



**Railway station**  
Lille Flandres 900m  
Lille Europe TGV-Eurostar 900m

### Points of interest :



Hospice Comtesse Museum **300m**  
Lille Opera House **500m**  
Cathedral ND de la Treille **500m**  
Fine art museum **1000m**  
Citadel parc **1.5km**  
Modern art museum **6km**

### View the good deals of the hotel

